

# EC0800

## ASSEMBLY & FITTING INSTRUCTIONS



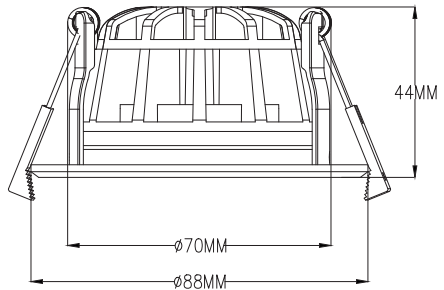
### D-LUX EC0800 Downlight

Please read these instructions carefully before attempting to install this downlight.

It is advisable to keep these instructions in a safe place for future reference. If this downlight is installed by a contractor, the contractor should ensure that the customer has a copy of these instructions.

#### SPECIFICATION

<b>Voltage:</b>	230V AC
<b>Lampless:</b>	Built in LED
<b>Wattage:</b>	8W
<b>Lumens:</b>	800lm
<b>Colour Temperature:</b>	3000k
<b>Cut Out:</b>	70mm
<b>Minimum Void:</b>	55mm.
<b>Bezel Finish:</b>	Interchangeable. White, Chrome or Brushed Aluminium.
<b>RA:</b>	>80
<b>Connection:</b>	Push on
<b>Beam Angle:</b>	45°
<b>Light Intensity:</b>	1150cd
<b>Fire Rating:</b>	Suitable for 30 and 60 minute ceilings (Standard, I & Posi Joists)
<b>Dimmable:</b>	Yes. For best results, use a Green Lighting Dimmer Module
<b>Driver:</b>	Non-Detachable

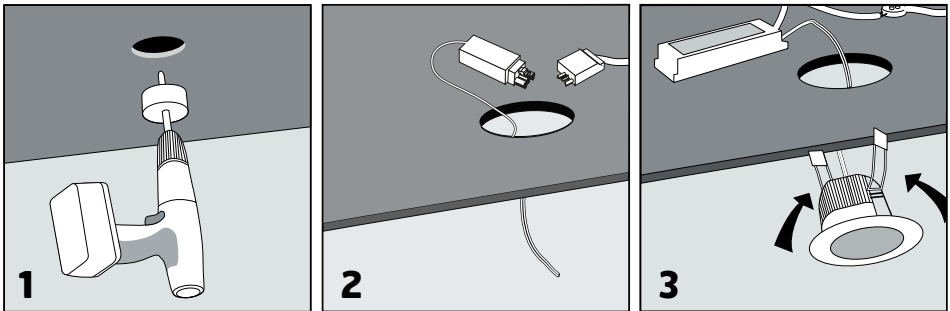


## Installation

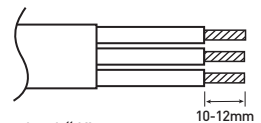
It is recommended that luminaires are installed and fitted by a qualified electrician ensuring the installation complies with the current IET wiring regulations BS7671:2018  
This product is designed for connection to a 230 Volt supply.  
All electronic drivers are double insulated.

**PLEASE ENSURE THESE INSTRUCTIONS ARE READ THOROUGHLY BEFORE INSTALLATION AND A COPY IS AVAILABLE FOR FUTURE REFERENCE.**

**ENSURE THE MAINS IS SWITCHED OFF BEFORE INSTALLATION.**



1. Slot the bezel onto the fitting and turn clockwise to secure.
2. Locate the areas suitable for installing these luminaires, ensuring there is a sufficient ceiling void without infringing on joists, water pipes or electrical cables.
3. Cut a 70mm hole (Figure 1). We recommend that a sample hole be cut in some scrap material to familiarise yourself with the installation.
4. Remove connector cover and, by pushing down the appropriate tab and inserting the wire into one of the two holes below, connect the mains wires to the terminal block, using the following wiring guide.
  - a. Connect the wire coloured Brown or Red (Live) to the terminal marked "1".
  - b. Connect the wire coloured Green/Yellow or Green (Earth) to the terminal marked  $\oplus$ .
  - c. Connect the wire coloured Blue or Black (Neutral) to the terminal marked "N".
5. Gently pull the wires to ensure the connection is secure and reattach the cover.
6. Connect the downlight to the mains connector. Pull and hold the springs backwards and offer the to the hole, release the springs. (Figure 3)



**Luminaire suitable for 30 min & 60 min Fire Rated timber ceiling and suspended ceilings, as well as Posi & I-Joists.**

## This Appliance is Class II

---

- Ensure that there is an adequate free air flow around the fitting
- Do not install this product into a wet plaster or damp areas
- Fit this product as illustrated
- Minimum ceiling void depth for this fitting is 55mm
- Cut out size required for this fitting is 70mm

To meet "Part C" of the building regulation and provide sufficient air-tightness to avoid condensation forming in cold unvented roof spaces, a seal is fitted in front of the bezel ring. This luminaire is suitable for installations where vapour permeable membranes are installed.

This luminaire is suitable for mounting on a normally flammable surface e.g. a wooden ceiling or a material based on wood.

This luminaire is rated IP65 from the front and IP20 from behind.

When your light comes to the end of its life or you have chosen to change it, please do not dispose of it with your normal household waste or by using a local amenity tip. (WEEE Directive effective July 2012).

**The light source of this luminaire is not replaceable; when the light source reaches its end of life the whole luminaire shall be replaced.**

**This fitting has no serviceable parts.**

Should you experience any difficulty when installing this product, please call the  
**Green Lighting Helpline on 01905 610200**  
during normal office hours 8.30am to 4.30pm, Monday to Friday

Please note that this equipment and its components have NO user servicable parts

Green Lighting tries to improve its products for the benefit of its customers. For this reason we reserve the right to make any changes to any product at any time without notice.

Green Lighting Instructions D-Lux LED ECO 800 Downlight  
Recognised by the NHBC and LABC

©Green Lighting Ltd. 2020    [www.greenlighting.co.uk](http://www.greenlighting.co.uk)